



WELCOME !

To those of you that are reading this, as you have expressed an interest, or have chosen to take part in the National Peace Officers Memorial in Washington D.C., in 2013, we wish to say, *Thank You* on behalf of all the Gold Star Family members. Whether you have attended in the past or this may be your first time, we can guarantee that you will be moved and impressed by your experiences there. You'll return with a renewed outlook and respect for our profession.

BRIEF BACKGROUND

In 1962, President Kennedy proclaimed May 15th as National Peace Officers Memorial Day and the calendar week in which May 15th falls, as National Police Week. Over the many years, members of the Chicago Police Department have made the journey annually to Washington D.C. in May, sharing in the observance to honor our fallen. In 2002, following the 911 tragedy, the Chicago Police Department had an unrivaled turnout at the National Memorial. Our attendance equaled or exceeded that of the New York Police Department, who, along with the NY Port Authority, lost a total of 72 law enforcement members on 911. Since then, the Chicago Police Department has upheld their reputation as one of the largest law enforcement agencies in attendance for over a decade. This recognition is due to the numerous 'individual' CPD members who sacrificed their own time and funds over these many years to be part of this honorable tradition.

GETTING THERE

If using air travel, the most direct and recommended airport is Reagan National (DCA), with numerous flight times out of O'Hare (ORD) Airport. Many discounted Midway (MDW) Airport flights fly 'only' into Dulles Airport which would require an additional mode of transportation to access downtown D.C. The fully completed "Silver Line" Metro from Dulles to downtown DC is scheduled for completion in 2014. (See "Airports" for app. miles, routes and fees to downtown DC from all airports) You may also consider driving or better yet, car pooling. In the past, members were able to secure a discounted rate from rental agencies within their districts. The average drive time (from Chicago) is app. 10-12 hrs. with various factors affecting travel. When choosing a hotel, inquire into any additional parking fees not included in their daily room rates.

THE UNOFFICIAL CHICAGO POLICE GENERAL INFO. GUIDE WASHINGTON D.C., 2013

The pages that follow contain information relative to the National Law Enforcement Officers Memorial (NLEOM) in Washington D.C., 13-15 May, 2013. It is intended to assist our members, especially first-timers, in planning their individual agendas based upon the listing and explanation of some of the various functions and activities. You need *not* be an active member of the Chicago Police Dept. to take advantage of these included CPD discounts and activities listed within. All dates, times & costs are currently as accurate as possible as of distribution of the 2013 Info Guide. Thank You for your dedication to *Honor Our Fallen*, and commitment to assure their families that they will be... **"ALWAYS REMEMBERED !"**

The Unofficial Chicago Police General Information Guide, Washington D.C. 2013

HOTELS

There are approximately 121 properties and 28,711 hotel rooms located in Washington, DC. The Greater Washington Metropolitan Region is home to approximately 660 properties and 106,051 rooms (including those located within DC proper). DC's hotel occupancy's reach their peak in March through July and October. Average daily rates reach their highest levels during April, May and October. A check with their Tourism Bureau indicates that Washington D.C. is again experiencing a shortage of rooms in 2013 during our time frame due to a large number of meetings, events and conventions in town that has taken up many of the rooms and driven up the prices. This does not include the tens of thousands of Law Enforcement Officers from throughout the nation booking rooms for the National Memorial. Members may seek accommodations on their own through the typical methods, (i.e. travel agents, friends or Internet hotel comparison of rates and availability.) A simple way to search the majority of the hotel sites is to go to Kayak.com which has an option to search multiple sites for comparison. Once on Kayak.com, click on the "Search All" option which will allow you access to Hotels.com, Hotwire.com, Priceline.com, Expedia.com and Booking.com simultaneously, all on the original Kayak site.

As in the past, some of our dedicated members while in Washington D.C., research discounted* hotel rates in person for the following years for our members. Det. Sharon Colby has again researched and bargained for a discounted* rate for a limited number of rooms in one downtown D.C. site, the Grand Hyatt Hotel (See information #1 directly below)

1) Anyone interested in attending the National Law Enforcement Officers Memorial in Washington, D.C. in May 2013 and needs hotel accommodations should contact Detective Sharon Colby (Area Central Detective Division). Det. Colby has secured a block of rooms at the downtown Grand Hyatt Hotel, 1000 H St. NW. This hotel is in an ideal location in Washington and the Metro train station stop is located right in the lower level of the building. The rate is \$239.00 per night for a room with 2 double beds or 1 king size bed. Check in date is 13 May 2013 and check out is 16 May. If you would like to take advantage of this discounted* rate and secure a room or have any additional questions, contact Det. Colby directly at 747-8434, Pax 1113, 2nd Watch or via her cell at 773 544-2908. Do not contact the hotel for these discounted* rates as this is a previously secured group rate (i.e. a direct hotel check via the Internet and Kayak type discounted sites list the Grand Hyatt daily rate starting at \$379.00. Contact Colby for the discounted* \$239.00 rate) View these guest rooms and hotel amenities at: GrandWashington.Hyatt.com

2) In addition, a second option for Chicago Police attendees has been secured by another source who offered to again repeat the discounted group rates and services offered to the CPD in 2012 at the Arlington Court Suites Hotel, 1200 N. Courthouse Rd., Arlington VA, 22201. Just across the river from DC, every room is a suite that has a full kitchen with dining and lounging areas. Included with the rates are *free* hot breakfasts daily along with a light food fare in the evening. The Metro is app. 2 blocks away and there is also a shuttle for transport to neighboring attractions. Special CPD daily rate for Arlington Court Suites is \$209.00. Again, this special rate can only be obtained by contacting our source directly and not by contacting the hotel. Direct contact must be made to [Susan Tanada](mailto:Susan.Tanada@arlingtoncourthotel.com), Senior Sales Mgr. at her direct line 703 247-1005 or by email: Susan.Tanada@arlingtoncourthotel.com NOTE: You must indicate "Chicago Police Dept." as the 'group' to get *this* special rate. These discounted rooms are limited and they go quick, so it's, "First Come, First Served." View these guest rooms and hotel amenities at: www.arlingtoncourthotel.com

Hotel rates may be offset by sharing rooms and splitting the costs between occupants. Most allow up to 4 occupants. Suites have sleeper-sofas in addition to one and two beds and or bedrooms. Check with individual hotels to verify accommodations. Hotels just outside of the downtown area tend to be a bit less expensive. (i.e. Downtown DC hotel tax is 14.5%, Arlington VA is 10%) If booking outside the downtown area check to see the proximity from your hotel to the closest Metro line. Some hotels offer free shuttle service to their closest Metro station. Once on the Metro line all downtown locations and attractions are easily accessed. (*See "Transportation " for Metro info) Be aware that some hotels, while indicating they are close to downtown attractions may be in less desirable neighborhoods. Check carefully where the hotel is located prior to confirming your booking. The above two listed hotels are in the 'recommended' areas of town and are very close to the Washington Metro rail service another recommended perk. It must be stressed however, that you need to book your hotel reservations ASAP as the available rooms are at a premium, even at this early booking stage. Airfare also fluctuates so the same rules apply. The longer you wait, the higher the rates and lesser the availability even at the less desirable hotels. Plainly stated, **Book your rooms NOW!**

The Unofficial Chicago Police Information Guide

AIRPORTS

Ronald Reagan Washington National Airport (DCA) (Suggested/Closest Airport Location)

Distance from downtown: 4 miles
Drive Time: 20 minutes (Rental Car)
Taxi: Typical minimum charge is app. \$16.00
Private Sedan: \$55.00 one way (reservation required)
Subway/Rail: \$1.75 (Convenient, efficient, cheap / highly recommended)
Board Metro right outside airport. Take **Yellow** or **Blue** line to the closest Metro stop of your destination. See Metro Map for directions and assistance.

Washington Dulles International Airport (IAD) (Extra Distance / Extra Cost, NOT recommended unless airfare is a factor)

Distance from downtown: 26 miles
Drive Time: 50 minutes (Rental Car)
Taxi: Typical minimum charge is app. \$55.00
Private Sedan: \$75.00 one way, (reservation required)
Presently, there is no direct Metro rail service to Dulles with a proposed line to downtown DC scheduled for completion in 2016-17. If you must use this airport, take the Express 5A Metro bus which makes 4-5 stops from the airport to downtown including the Rosslyn station in Arlington and the L'Enfant Plaza station. Both stations can access the **Orange** and **Blue** lines with L'Enfant Plaza stop also accessing **Yellow** and **Green** Lines. See Metro Map.

Baltimore-Washington International Airport (BWI) Unless you fly for FREE to here...'fawgitaboutit !'

Distance from downtown: 40 miles
Drive Time: 1 hour (Rental Car)
Airport Shuttle Service, on request: \$35.00
Taxi: Typical minimum charge is app. \$60.00
Private Sedan: starting at \$ 90.00 one way, reservation required
Alternate Transportation: Take Amtrak to Union Station, board Metro to downtown. App. Cost: (combined) app. \$35.00

13 May 2013 Candlelight Vigil Ceremony (Monday) 8 p.m.

The 25th Annual Candlelight Vigil will be held at the National Law Enforcement Officers Memorial on Monday, 13 May 2013 in Judiciary Square*, between 4th and 5th Sts., NW



Limited overhead view of Memorial during Candle Light Vigil with app. 20,000 attendees

Everyone is invited. No tickets are required. A reading of the newly engraved names immediately follows the ceremony. This event usually is an extensive program that includes speeches and musical tributes so if you require seating, arrive extra early.

The immediate area within the circular memorial is reserved for family members and participants in the candlelight vigil ceremony. There is standing room all the way around the Memorial and across the street with limited seating on the steps and along the walls. The best viewing is stage center or within line of sight of the large screens set up to serve those in attendance. Because of the massive crowds in attendance around the Memorial that spills out into closed off street and surrounding area, this is not a good time to plan on viewing the Memorial wall. The best time would be during daylight hours to spend time reading and observing all the mementos left at the wall. The area is open 24 hrs. for late night viewing, with daytime the suggested time to take in all the activities. This is a solemn, must see, moving ceremony and a tribute to *"America's Thin Blue Line"* during which a blue laser pierces the night sky above an impressive sea of 20,000 flickering candles held by partners, family, friends and those in attendance.

DIRECT STOP: Take the Red Line Metro Rail which stops directly at the Memorial. Use any connecting colored Metro line to the Red line and transfer for the easiest access. Once on the Red Line, get off at Judiciary Square* Station and take the escalator up to street level and you'll be right in the center of the memorial location.

*Note: This station closes around 10 or 11 p.m., so be prepared to taxi back to the hotel, especially if you are anticipating stopping at "Tent City" for a few beers.

(See Tent City for Details)

14 May 2013

Honor Guard & Pipe Band Competition

Tuesday

This is the 11th Annual Steve Young Law Enforcement Honor Guard Competition and the 3rd Annual National Law Enforcement Pipe Band Competition.

The competition starts at 8:00 a.m. to mid-afternoon at John Marshall Park between the Federal Court House and the Canadian Embassy. (4th and Pennsylvania)

The area where the competition is held is next to the “*Newseum*,” a journalism museum. Admission is normally free during “Police Week” upon display of a police I.D. There is no charge at the Honor Guard or Pipe Band competitions. The dress is casual, according to the weather. The Honor Guard competition includes a rigid individual uniform inspection, posting of the Colors along with team exhibitions, all judged by members of the elite United States Military Honor Guard Team.

Add this competition to your must see events while visiting DC during Police Week.

Show up early and support our CPD Honor Guard and Pipes & Drums Units.



Photos of CPD in Honor Guard Competition and rigid inspection by U.S. Army Honor Guard (2010)
Although the Chicago Police Honor Guard and Pipe Band have won many of the top honors over the past years, the G8 & NATO Summits precluded their 2012 attendance and competition.

For a unique pictorial review of over 600 copyrighted photos of the 2011 competition of Chicago along with all the other law enforcement agencies in action, check out the below website ...

http://www.maletphoto.com/Events/Police/Police-Wk-Honor-Guard-2011/17054578_CDbhhF#1291362098_QJC6B4v

Late (2013) Note: The Chicago Police Honor Guard have confirmed a Wreath Laying Ceremony at Arlington's Tomb of the Unknown Soldier on behalf of the CPD. See topic elsewhere in this guide to learn more of the details. Another MUST SEE!

The Unofficial Chicago Police Information Guide 2013

FREE EVENTS

Friday, 10 May 2013 (Evening)

United States Marine Corp Silent Drill Team Performance

For those members that are extending their stay in DC to have extra vacation time to leisurely take in the many sights in and around our nation's capitol, a suggestion is that extra days be added on the front end (i.e. Fri., 10 May, Sat-Sun, 11-12 May) to include this spectacular presentation. Friday evenings May-Aug., the United States Marine Corps Silent Drill Team performs along with the President's Own Marching Band at the Marine Barracks, 8th and I, in Washington DC. Free tickets for the Evening Parade (8:45-10:00 pm) are available on line* by 1 March 2013, on a first-come, first-serve basis. Seating for the evening parade generally requires a reservation and can be requested online by accessing the * below website once the dates are made available. They also have a general admissions line at each Friday evening parade that they use to fill any unclaimed seats. Seats are released at 8:00 pm each Friday evening and are filled on a first come first served basis. Normally all are admitted however reservations are recommended.

To learn more about this free spectacular one hour and 15 minute performance of music, precision marching and drill exhibition, Google: 'USMC Barracks Evening Parade' or check their on-line reservation site: *<http://www.mbw.usmc.mil/RequestReservation.aspx>

MARINE BARRACKS EVENING PARADE & SILENT DRILL TEAM



10 May 2013, 8th and "I" Sts., SW Arrive between 7: 15 - 7:45 p.m.

Metro directions: Take the Orange or Blue line to the "Eastern Market" station.

Walk four blocks south from Pennsylvania & 8th St. to the Marine Barracks at 8th & "I" to check-in area.

Tuesday, 14 May 2013 (Evening)

Pipe Band March and Service

This May 14th is the 19th Annual Emerald Society and Pipe Band March and Service. It is sponsored by the National Conference of Law Enforcement Societies, Inc. The actual ceremony takes place at the National Law Enforcement Memorial. Various pipe bands from throughout the nation assemble around 4:30 p.m. at New Jersey and F Street NW. They step off promptly at 6:00 p.m. and parade to the National Law Enforcement Officers Memorial, 400 block of E Street, NW for their presentation. Take the Metro Red Line to Judiciary Square station and you'll be right within the memorial. Check out the direction of the parades approach, find a curb along the parade route, grab a curb, sit down and enjoy. A ceremony will follow the arrival of the 2013 host bands at the memorial. Included in the parade are numerous law enforcement pipe bands, restored, antique and new police vehicles with the latest equipment, graphics and much more. Normally, this event takes place rain or shine. The event is free and no reservations are needed.

Main Memorial Service

This is the *32nd Annual National Peace Officers Memorial Day Services* and the main event of the entire trip. This program takes place on the west end (Mall side) of the United States Capitol Building. The assembly location is on the grassy area in front of the Capitol. When using taxi service to get to the Capitol, request that you be dropped off on the Northwest side of the Capitol Bldg. (indicate Union Station side). You'll be closest to the assembly point of the CPD/Illinois contingent. If using the Metro rail, take either the BLUE or ORANGE line and get off at the "Capitol South" station. Once you exit the Metro rail at the Capitol South stop, there will be many other law enforcement agencies in uniform exiting as well. Follow them for the 4-5 block walk to the Capitol Building special entrance area. **Note:** If you are carrying your weapon, you normally have to go through a Secret Service checkpoint. You will need your active police I.D., and/or your IROCC concealed carry I.D. (retired) if not in uniform, in addition to your badge to be allowed access into the Capitol area. This is an annual 'required' stipulation by the U.S. Secret Service. Go along with the program, please. All the surviving Gold Star family members are transported to the Capitol on buses, lead by an impressive escort of police motorcycles from all over the country. Upon arrival, they then are escorted down the pathway by their police agency representatives to the steps of the Capitol for the memorial ceremony. Police officers in dress uniforms from throughout the U.S. and as far away as Mexico, Puerto Rico and England line that entry path to the Capitol steps as a sign of honor and respect. All the police agencies normally group together by state in a designated area. It's normally easy to locate the CPD group due to the impressively large amount of CPD members in uniform. ALL ILLINOIS police agencies are welcome to join the CPD contingent on behalf of our state. Proceed all the way 'up front and the farthest to the left' along the pathway as you face the Capitol Building. At this particular location, Chicago/Illinois traditionally is the 1st police agency(ies) the families see on their way in and we are joined by the LAPD as the last out at the conclusion of the program. Dress of the day for Chicago members in uniform are "Class A" uniforms, consisting in part as the CPD blouse, tie and uniform crown cap. NO variations of the 'Class A' uniforms please. White gloves and batons are not required. All particulars relative to our role here will be explained to you when you arrive at the appropriate time. Just look for our fellow officers and join in. You can bring your camera and take pictures throughout the day. You will be able to meet police officers from all over the nation here as once the families are seated and the program begins, there will be time to casually mingle and converse with the many law enforcement members in attendance. However, later when the names from our state are being read, we will fall in as a group and then hold a salute while all the names from Illinois are read as a final farewell and sign of respect. Since this is the main event and the culmination of Police Week, we ask for your compassion, especially at this ceremony. While Chicago always has an impressive turn out at this ceremony, the 'true test' of our dedication and commitment is how many of us, remain to the end. The member's names are read alphabetically in order, by state. It's important that the member's family from Wyoming that lost their loved one witness the same amount of police officers in attendance, as does the family from Alabama when their loved one's names are initially read. When the ceremony has concluded, the family members are again escorted out down the same pathway that we lined upon their arrival. Over the years, Chicago has teamed up with the LAPD who line up across from us as the last law enforcement agencies the families see as they retreat from the Capitol ceremony. We hold true to this recently honored tradition as a group effort annually. The entire program lasts for app. 2 hours, a small sacrifice on behalf of those that gave it their all, "The Ultimate Sacrifice." This last act of sacrifice and brotherhood shows that we are all part of that, 'Thin Blue Line' and hold true to our commitment to those that lost their loved ones that... "***We Will Never Let Them Walk Alone !***" Depending on the weather, you will possibly be out in the open with little or no shade so prepare yourself for your own personal needs as required, such as water, sun block, rain gear, etc. At the conclusion, Chicago P.D. has traditionally taken a group photo right on the steps of the U.S. Capitol. Our gracious and expert photographer will capture the moment using his equipment and/or using your individual cameras for posterity. Many officers extend their stay and leave the following day to give themselves time for a final dinner or sightseeing that afternoon or perhaps the following morning if they book a late flight out. It is suggested that if you drive to D.C. that you seriously consider leaving on the following day (16th) especially if you are the lone driver as the ceremony on the 15th is physically and emotionally trying. It is in your best interest to hit the road for the drive back... fully rested. At app. 3:30 the flowered wreath completed at the Capitol with individual flowers placed by each of the family members that lost loved ones that year is then transported and deposited at the main memorial wall in a short ceremony sponsored by the FOP for those wishing to witness this event as well.

* *Please arrive "a minimum of 1 hour" (0930-1000) earlier to assure CPD our annual prime location up front and allow our members to 'be in place' well before the arrival of the Gold Star surviving family members and their department escort representatives.

Unofficial CPD Information Guide 2013

Getting Acclimated

Directions: Downtown Washington DC is divided into 4 quadrants. You'll need to know what quadrant an address is in before you attempt to locate that address. All quadrant locations follow the address, i.e. NW, NE, SW and SE. To get your bearings while downtown, simply locate and face the Capitol Building from the "mall" side. The mall is the grassy area with the Capitol Building on one end and the Lincoln Memorial on the other, and the Washington Monument (the tallest structure in DC) in the middle. As you face the Capitol you will now be facing EAST. Therefore, SOUTH is to your right and NORTH to your left, with WEST directly behind you.

Now, imagine the Capitol Building itself as the midpoint, or axis. The center of the building would be like our State and Madison. All addresses go out from this central location in their respective directions. Streets are identified by *alpha-letters* as they go out NORTH and SOUTH (left or right) as you face the Capitol from the mall as A,B,C,D, Streets etc. in that particular quadrant.

Streets are identified *numerically* as they go out EAST and WEST (front or rear) from the same Capitol center point as 1st, 2nd, 3rd, 4th etc. all the way to the other end of the mall with the Lincoln, Viet Nam and Korean War Memorials at app. 23rd Street.

It sounds more confusing than it is but once you locate the Capitol Building for reference and remember which 'quadrant' you need to locate an address in, just count out in appropriate letter and number directions to find that address. Maps are available for printing on line for reference.

Any street that runs *diagonal* in the quadrants are named after states for distinction. Once you look at a map it should make sense. (A picture is worth a 1000 words) If in doubt, follow two simple rules....."Real" men don't ask for directions and "most" cab drivers will get you there!

Transportation: 1) **WALK!** Most points of interest in the downtown area are within reasonable walking distance, depending on condition, age and sobriety.

2) **Metrorail (Metro)** Their subway system is remarkably safe, efficient and exceptionally clean and close to most points of interest. **NOTE:** During "Police Week" all Law Enforcement Officers ride for free, after showing some id's. At times, there were some varying interpretations by 'a few' of the Metro employees who would only let those in uniform ride for free. Again, this appeared to be an isolated incident and since then it appears that they have reinstated or clarified this perk and since then there has been minimal reported misunderstandings of this 'privilege' during "Police Week." Again, as a 'privilege' this may also be subject to change. If necessary, you can buy and carry a Transit Pass with you to play it safe. The procedure is simple. Every Metro, or subway station as we know it, has a fare transit card dispensing machine. All one needs to do is insert cash (they may also accept credit cards) into the machine in the desired amount of credit. You will receive a Metro Transit Card for use on their system.

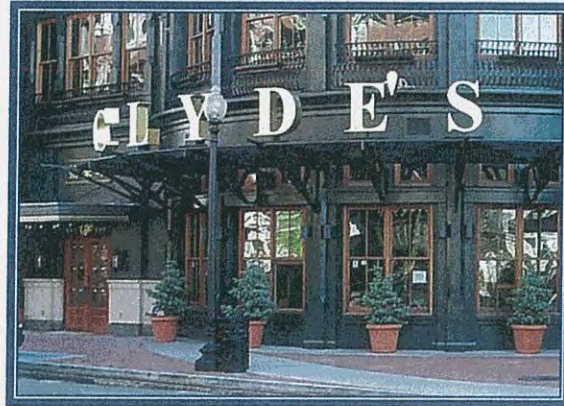
(The subway stations are identified at street level by a sign containing the letter 'M' in boldface.)

All one needs to do is insert the transit card into the turn style where it will be returned to you after electronically recording starting point and providing you access through. When you arrive at your final destination (you may have to switch lines at a transfer point on occasion) you simply insert your card into the exit turn style and the amount will automatically be deducted from your card, according to distance traveled. Your card will print out a running total of deductions indicating the amount you have left on your card for future use. Twenty bucks should get you through the three days based upon past experience. We were told that they have a liberal expiration time limit on them and we can attest to using left-over credit on Transit Cards from the previous year as an example. IF an agent recognizes you or your group as the police and waves you through, after showing I.D., consider it a bonus and always say, "Thanks!"

3) **Tourmobile or Trolley.** Tourmobiles and trolley tours are available to almost all of the points of interest for a fee that covers the whole day and allows one to get on/off and spend as much time at a particular site, as necessary, before reboarding to continue the tour or return to the point of origin. The service makes continual loops to most of the important attractions in the D.C. area. This appears to be the "typical tourist" mode of transportation. There is also a "night tour" where one can experience the sights in a completely different way.

4) Taxicab Within the 'downtown' DC area, all cabs work on zone rates.

Predetermined rates apply from one zone to another as opposed to a meter that registers the distance. Additional charges may also apply.(i.e. additional passenger fees, am/pm rush hour rates 0700-0930 & 1600-1830 and radio dispatch extra fee) 'Outside' of the DC downtown area, all the cabs are metered. It works out about the same with a zone cab ride to Georgetown for example, within a buck or two of a metered ride back. TIP: When about to board a zone fare taxi in downtown DC, ask the driver (if he understands English) how much to get to (state) a particular address/destination. This has a tendency to alert the cabbies that you appear knowledgeable of fare prices and are checking his honesty. Most of the downtown taxis are independently owned and on slow days a driver might shoot you (relax, it's just an expression, read on) a low ball fare when asked, just to get your business. For the most part, taxis in DC based upon our experience are pretty reliable. Unless you're taking the Metro to a specific location for cost/convenience, taxi fares are not all that expensive with the average fares around \$20.00. If you split the fare or take turns paying the cabbies you'll find it's not all that expensive. During late night excursions, especially after drinking, taxi transportation is highly advised.



ANNUAL UNOFFICIAL CHICAGO POLICE 'ORGANIZED' LAW ENFORCEMENT GATHERING

For over the last decade, members of the Chicago Police Department have hosted a group gathering on 14 May in the evening to meet together in Washington D.C. In the past we have enjoyed cruises down the Potomac River to a local restaurant, Cubs games when playing in D.C. and most recently an organized gathering of light fare and drinks at a local restaurant. This year, 2013 will mark our 3rd year in a row hosting our annual gathering at *Clyde's* Restaurant of Gallery Place. Since the precise time, cost and exact private room location at *Clyde's* has yet to be finalized at this time, an option to determine interest for now has been established. If attending the National Police Week activities in DC this year and wish information about this event, simply send an email to, cpdnpw@gmail.com (Chicago Police Dept. National Police Week) along with your email address, indicating interest. Once confirmed, a reply email with all the particulars (closer to our departure) will be sent back to you. At that time you can then confirm your interest through the same site that will further instruct you with the details. In the past our CPD Pipes and Drums have made a guest appearance at this gathering. It is open to all law enforcement members and their guests with emphasis on 'confirmed reservations' to insure the proper room size, food and wait staff for our group. It is suggested that you send your email **ASAP** so we may give our host an estimate of the 'approximate' number of attendees again this year, to better bargain prices.

Chicago Police Honor Guard Wreath Laying Ceremony (Tomb of the Unknown Soldier, Arlington cemetery)

As of this printing it has been established that our CPD Honor Guard have been approved and will have the honor to lay a wreath at the Tomb of the Unknown Soldier in Arlington National Cemetery. This honor will take place between the 'Changing of the Guard' ceremonies which is performed every ½ hour at the tomb. Since Arlington Cemetery is another suggested 'must see' attraction in D.C., it is highly recommended that your plans to visit Arlington coincide with this Chicago tribute to Honor Our Fallen. While the time and date has yet to be confirmed, once learned, it will also be made available to our members by sending a request to the email site cpdnpw@gmail.com established for late info. such as *Clyde's* above. The Metro rail **Blue** line has a stop at 'Arlington.' Admission into Arlington is free unless you chose to take a guided bus tour within. NOTE: If walking to the Tomb of the Unknown Soldier, allow yourself at least 45 minutes from the 'expected time you plan to arrive' at the Arlington Metro stop to allow time to walk to Changing of the Guard site considering the distance, heat and terrain factors.

13-15 May 2013

TENT CITY

11a.m., until 0200 hrs.

Where: Although the site has changed only a few times over the many years, for nearly a decade their most popular site was a fenced in area within reasonable walking distance from the National Memorial. In 2012, just prior to Police Week, FOP DC Lodge 1 announced a late change to a new location. It appears that this same new site will be used again for Tent City in 2013 during the three days of Police Week. It is located just a few blocks from the Washington Nationals Stadium at the corners of 1st and 2nd streets SW and S and T streets SW. (The exact address for your GPS is 1880 2nd Street SW Washington DC). Unfortunately, this site is not close to the National Memorial or within suggested walking distance and location of the closest Metro stop. Although there was sporadic shuttle service in 2012 to the site, Taxi service is the highly recommended means of access, especially if planning on consuming alcohol.

What: While changing from year to year according to various vendors and location, it's normally a 2-3 square block fenced in area, set up with tents in which various vendors sell unique police related items and other souvenirs. Vendors will be set up during this time and will be there for all three days. FOP DC Lodge 1 beer tent and bar/ food service will also be open along with music and entertainment with occasional police pipe bands making impromptu visits. (Pipe bands will be required to check in with security before starting to play. No pipe bands will be allowed to play on May 15 at the site.) The city makes sure that the alcohol portion is in a controlled environment and off-duty DC coppers make sure no one enters or leaves the fenced in area of Tent City carrying any liquid for liability and permit compliance. This is an outdoor event and dress is casual. It has a tendency to be the most crowded after the Candlelight Vigil on the 13th. There are normally many unique items for sale there. You should visit tent city to check out the items if you want police wares or a 'Police Week 2013' souvenir. You should also visit tent city before you visit the (Official) Memorial Visitors Center and Gift Shop within a few blocks of the Memorial at 400 7th Street NW (7th and D Streets NW if you are looking for t-shirts, sweats etc as tent city prices are sometimes near 50% less than the National Store. While the hours of tent city vendors are usually until closing, 0200 hours, the Memorial Visitors Center and Gift Shop hours for 2013 are: tentatively*, 13th, 9am-4pm then 9pm-12 mid., 14th, 9am-9pm, 15th, 9am-9pm, 16th, 9am-9pm. (*Call to verify hrs. 202-737-3213) While the Gift Shop could be rather pricey, they have the 'National Memorial' logo items and the profits go to support the Memorial. The National Memorial also discounts various items so shop around at both locations

Who: This area is intended for Peace Officers and guests. This is not the place for young children at night, especially on the 13th after the Candle light vigil when it's the most crowded. It is suggested that if you want to bring your younger children into tent city to view the many hats, t-shirts, souvenirs, pins and thousands of some very unique items for sale, you should do so during the daytime hours, preferably before noon when alcohol is served.

When: Open daily around 11 a.m. during our entire visit.
Beer sales do not start until 12 noon. The area closes at 2 a.m.

M System Map

MetroOpensDoors.com
Customer Information Service: 202/637-7000
TTY Phone: 202/638-3780

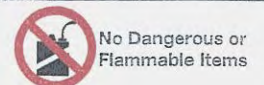
Legend

- Red Line • Glenmont to Shady Grove
- Orange Line • New Carrollton to Vienna/Fairfax-GMU
- Blue Line • Franconia-Springfield to Largo Town Center
- Green Line • Branch Avenue to Greenbelt
- Yellow Line • Huntington to Fort Totten



Metro is accessible.

REV 10/08/08



EPILOGUE

As proven over the years, the Chicago Police Department has maintained the time honored distinction of having one of the largest attendance records in D.C. for over the past decade. Again, this is a tribute to the many individuals who sacrificed their own time and funds over these many years to be part of this worthy tradition to...

"Honor Our Fallen"

To those that will join us in 2013, may the pride again shine upon you as you feel the outpouring of gratitude and emotion in this truly humbling experience.

We salute and will forever hold true to the commitment to our Gold Star Families...



"We Will Never Let Them Walk Alone"

'Sgt. Al' Piantkowski (ret.)
Email : sgtal018@hotmail.com